



INFOCADO WEEKLY REPORT

22nd to 28th December 2007 (Wk 52)

Happy New Year!

Green shading indicates dispatch data

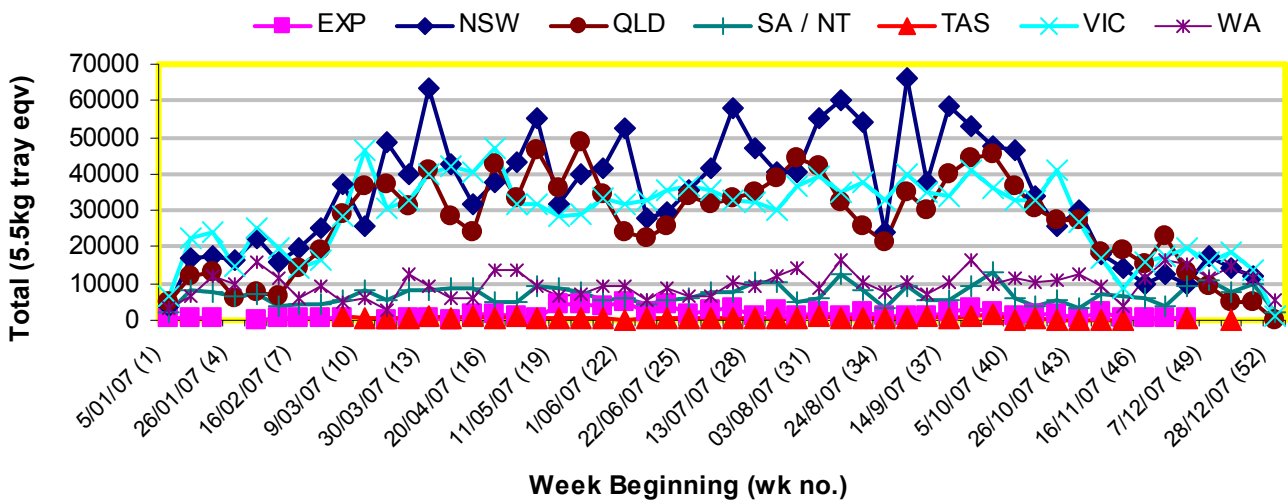
Yellow shading indicates forecast data

Industry Dispatches 22nd to 28th December (Wk 52)

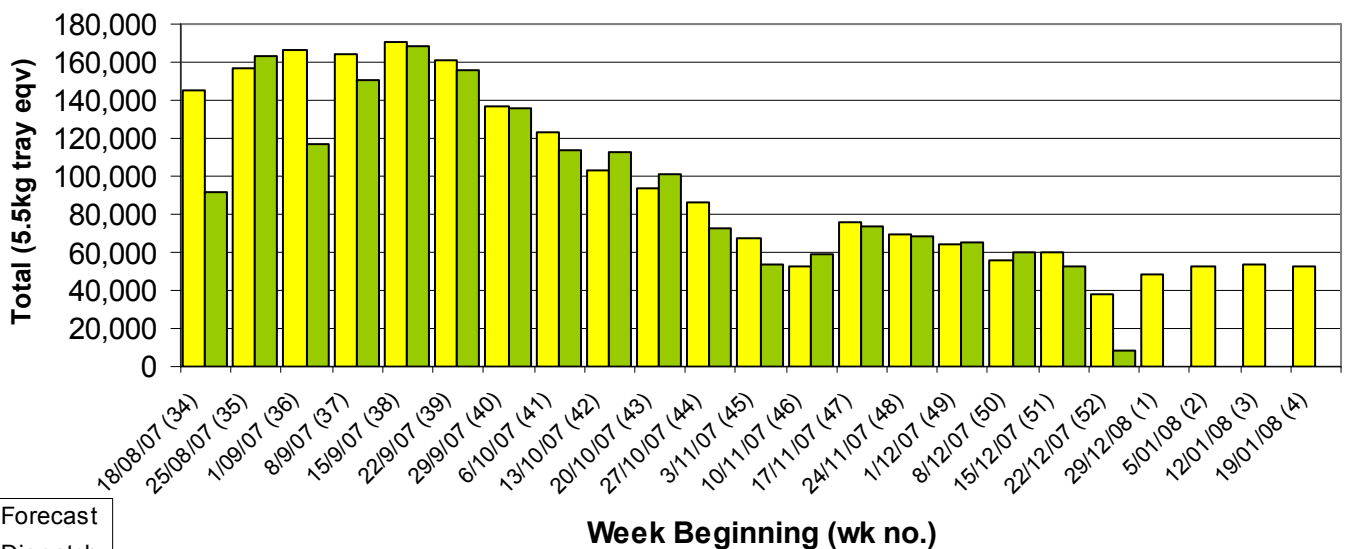
Dest. State	5.5kg	5.5kg	5.5kg	5.5kg	5.5kg	5.5kg	5.5kg	5.5kg	5.5kg	5.5kg	Bulk	P/PK	Other	5.5Kg Eqv Trays All
	<16	16	18	20	22	23	25	28	28+	Total	10Kg	Kg	Kg	Total
EXP														
NSW														
QLD				1					4	5				5
SA / NT				2,160						2,160				2,160
TAS														
VIC	199	100	100	117	72	73	112	96	54	923	75			1,059
WA		45	228	821		1,781	1,202	937		5,014	203			5,383
Total	199	145	328	3,099	72	1,854	1,314	1,033	58	8,102	278			8,607

Throughput Australian avocados by destination State

Throughput 1st January 2007 to date = 5,624,071 5.5kg tray eqv



Dispatch vs weekly forecast for Australian Avocados - all varieties and all packs (18th August 2007 to 25th January 2008)



Major Capital City Weather Report – week ahead

City	Wed	Thu	Fri	Sat	Public Hols	School Holidays
Brisbane	26°	26°	26°	28°	Australia Day—28/1/08	15th Dec-28th Jan
Melbourne	25°	30°	35°	37°	Australia Day—28/1/08	22nd Dec-28th Jan
Perth	38°	40°	33°	32°	Australia Day—28/1/08	14th Dec—3rd Feb
Sydney	26°	26°	25°	24°	Australia Day—28/1/08	22nd Dec—28th Jan

Forecast Data (Week 52-4)

Variety	Trays - Total	Bulk	P/Pk	Other	All - Total
	5.5Kg Eqv	10Kg	Kg	Kg	5.5Kg Eqv
Week 52—begin 22/12/07					
Gwen	1,500	90			1,664
Hass	26,188	4,794	150		34,931
Lamb Hass	190	10		100	226
Reed	600	60			709
Week Total	28,478	4,954	150	100	37,530
Week 1—begin 29/12/07					
Gwen	1,150	70			1,277
Hass	36,688	5,020	200		45,851
Lamb Hass	220	20			256
Reed	500	60			609
Week Total	38,558	5,170	200	0	47,994
Week 2—begin 5/01/08					
Gwen	1,600	90			1,764
Hass	39,628	5,382	150		49,440
Lamb Hass	220	20			256
Reed	1,550	70			1,677
Week Total	42,998	5,562	150	0	53,138
Week 3—begin 12/01/08					
Gwen	1,300	90			1,464
Hass	40,840	5,294	200		50,501
Lamb Hass	220	20			256
Reed	1,500	60			1,609
Week Total	43,860	5,464	200	0	53,831
Week 4—begin 19/01/08					
Gwen	1,200	30			1,255
Hass	40,340	5,194	200		49,820
Lamb Hass	220	20			256
Reed	900				900
Week Total	42,660	5,244	200	0	52,231

Dispatch Data (Week 52—begin 22/12/07)

Variety	Trays	Bulk	P/PK	Other	5.5Kg Eqv
	5.5kg eqv	10Kg	Kg	Kg	Total Trays
Gwen	160	10			178
Hass	7,392	253			7,852
Reed	345				345
Wurtz	205	15			232
Total	8,102	278			8,607

Week 52 contributors

AvoLand
 Avonova
 C F Fechner
 Chinoola Orchards
 Chislett Developments Pty Ltd
 Coastal Avocados
 Delroy Orchards
 Karri Country Produce
 Merrinee Farms
 Midcoast Avocados
 Natures Fruit Company
 Sunfresh
 VP & EA Farrell

New Zealand Avocado Exports—Forecast v Import Statistics (5.5kg eqv trays)

Export Dest'n	Aug	Sep	Oct	Nov	Dec	Jan	Feb	Mar	Apr	Total to date	
NZ Export Forecast		100,000	350,000	600,000		550,000	600,000	450,000	140,000	10,000	2,800,000
Australia	355		163,000	471,000		Avail mid Jan					634,355
USA		51,500	71,500	26,500		77,000 (includes estimate for w/e 31/12/07) *					226,500
Japan		26,000	43,000	33,000		Avail end Jan					102,000
Total	355	77,500	277,500	530,500	77,000+						962,855

* There was an error in last weeks USA import data. It should have read 60,330 not 78,000.

Percentage dispatched by region (Based on seasonal forecast - 2007)

