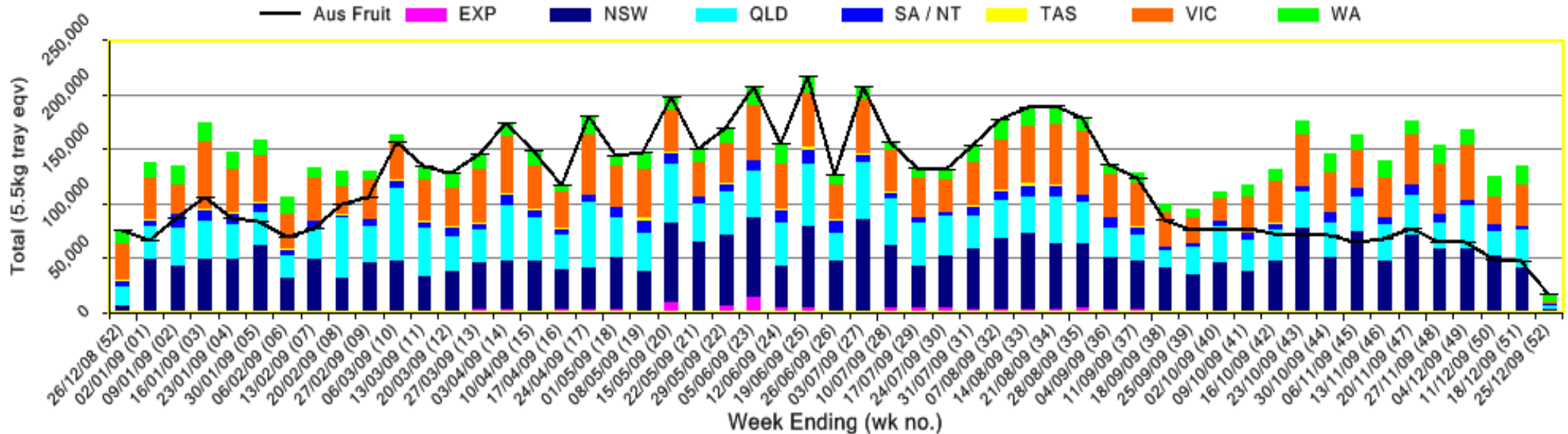


INFOCADO WEEKLY REPORT: 19th December - 25th December 2009 (Wk 52)

Industry Dispatches 19th December - 25th December 2009 (Wk 52)													
Dest. State	5.5kg	5.5kg	5.5kg	5.5kg	5.5kg	5.5kg	5.5kg	5.5kg	5.5kg	Trays - Total	Bulk	Other	5.5Kg Eqv
	<16	16	18	20	23	25	28	28+	5.5Kg Eqv	10Kg	Kg	Total	
EXP								392	336	728			728
NSW	72	124	276	488	523	347	405			2,235	523		3,186
QLD	1,080	82	221	584	95	415	29			2,506	145	435	2,849
SA / NT	15	69	124	261	49	266	300			1,084	411		1,831
VIC		49	145	104	198	126	71	22		715	76		853
WA		191	669	755	1,535	850	308			4,308	927		5,993
Total	1,167	515	1,435	2,192	2,400	2,004	1,505	358		11,576	2,082	435	15,440

Throughput Australian & NZ avocados by destination state
Throughput 1st January 2009 to date = 7,682,781 5.5kg tray eqv



Comments from the CEO

It was slightly disappointing that more packhouses and wholesalers did not enter their infocado figures for the Christmas week. As you can see the New Zealand dispatch figures and forecast for week 3 in 2010 were not entered. This had the most significant impact on the report (New Zealand forecast they would dispatch approximately 90,000 trays over the week up to Christmas). Please also note that there were a few packhouses from both the Tristate and the WA region that entered their dispatch figures but their names have been left out of the contributors list to ensure confidentiality of their data.

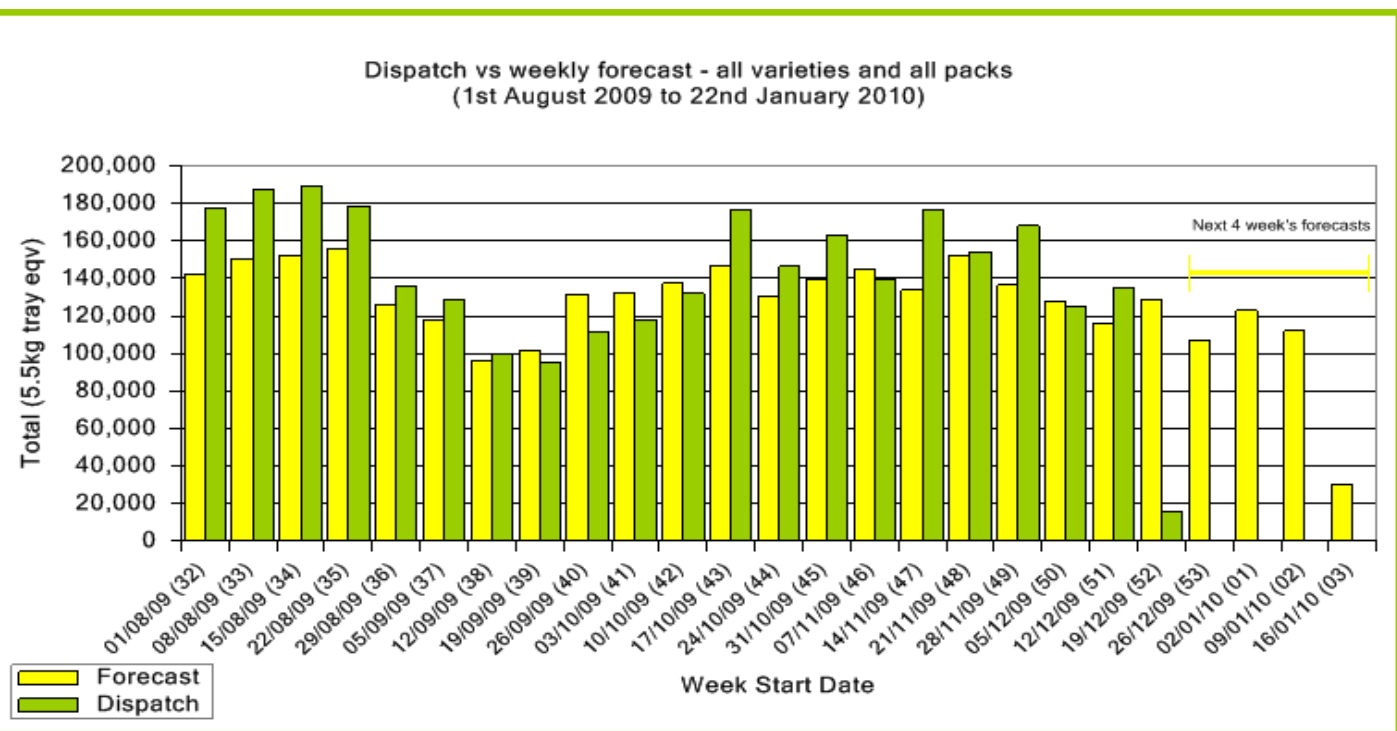


Forecast Data (Week 52 - 3)					
Variety	Trays - Total	Bulk	P/Pk	Other	All - Total
	5.5Kg Eqv	10Kg	Kg	Kg	5.5Kg Eqv
Week 52 - begin 19/12/2009					
Gwen	450	50			541
Hass	116,448	4,040	8,000		125,248
Lamb Hass	250				250
Reed	2,118	200			2,482
Sharwil				100	18
Wurtz	200				200
Week Total	119,467	4,290	8,000	100	128,740
Week 53 - begin 26/12/2009					
Gwen	250	40			323
Hass	101,504	1,740	8,000		106,123
Lamb Hass	300	50			391
Week Total	102,054	1,830	8,000		106,836
Week 1 - begin 02/01/2010					
Gwen	200	40			273
Hass	116,949	1,970	5,000		121,440
Lamb Hass	300	40			373
Reed	500	30			555
Sharwil	10				10
Wurtz	200	10			218
Week Total	118,159	2,090	5,000		122,868
Week 2 - begin 09/01/2010					
Hass	104,787	2,540	5,000		110,314
Lamb Hass	300	40			373
Reed	1,300	30			1,355
Wurtz	100				100
Week Total	106,487	2,610	5,000		112,141
Week 3 - begin 16/01/2010					
Hass	23,850	2,650	5,000		29,577
Lamb Hass	300	40			373
Week Total	24,150	2,690	5,000		29,950

Green shading indicates dispatch data

Yellow shading indicates forecast data

Dispatch Data (Week 52 - begin 19/12/2009)				
Variety	Trays	Bulk	Other	5.5Kg Eqv
	5.5Kg Eqv	10Kg	Kg	Total Trays
Gwen	441		57	545
Hass	9,574		1,882	12,996
Lamb Hass	364		27	413
Reed	1,196		116	1,486
Total	11,575	2,082	435	15,439

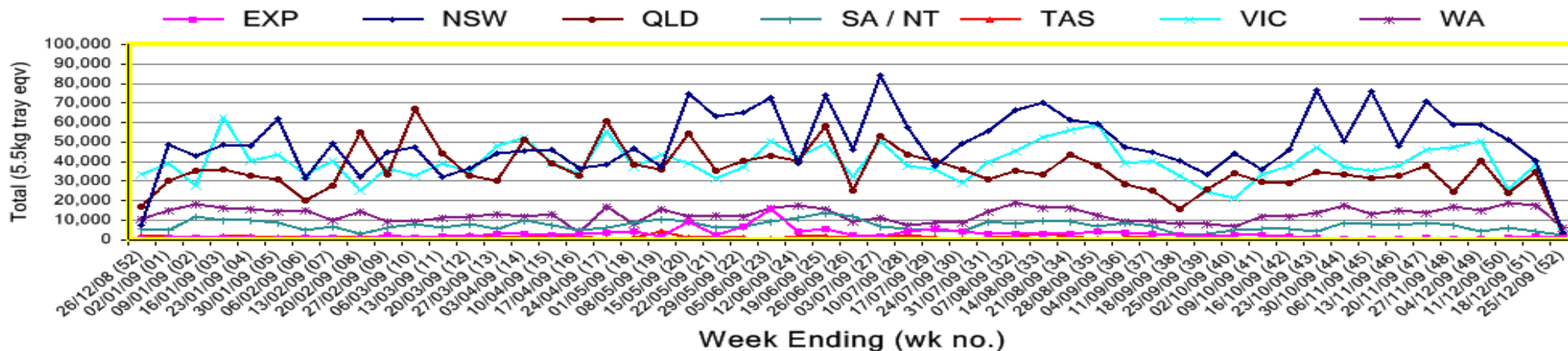


New Zealand Avocado Exports—Forecast v Import Statistics (5.5kg eqv trays) August 2009–April 2010										
Export Dest'n	Aug	Sep	Oct	Nov	Dec	Jan	Feb	Mar	Apr	Total to date
NZ Export to Australia Forecast		5,055	175,469	321,354	441,288	426,958	395,618	167,752	1,440	1,934,934
Australia		41,599	321,706	363,357	270,361					997,023
USA	2,727	15,090	22,787	6,183						46,787
Japan	4,519	28,746	64,348	56,333						153,946
Total	7,246	85,436	408,840	425,873	270,361					1,197,756

Percentage dispatched by region (Based on seasonal forecast - 2009)



Throughput Australian & NZ avocados by destination state
Throughput 1st January 2009 to date = 7,682,781 5.5kg tray eqv



Week 52 contributors - Packhouses

- I & A Tolson
- Midcoast Avocados
- Natures Fruit Company
- Serrata Enterprises

Week 52 contributors - Wholesalers

- Etherington (Perth)
- Kelly's (Melbourne)
- Murray Bros (Brisbane)
- Romeos Marketing (Brisbane)
- The La Manna Group (Adelaide)
- The La Manna Group (Melbourne)
- United Fresh (Adelaide)

Sales Report including Direct Sales from Packhouses, Wholesale Sales and Stock on Hand at Wholesale Level

	Trays 5.5kg eqv (incl. Mod6 & P84)				Bulk 10Kg Cartons				Pre-Pack Kg				Total (5.5Kg Eqv)					
	Hass	Shepard	Other	Total	Hass	Shepard	Other	Total	5.5Kg Eqv	Hass	Shepard	Other	Total	5.5Kg Eqv	Hass	Shepard	Other	Total
QLD																		
Total supermarket sales																		
Total non supermarket sales	# Data set not included because not enough QLD wholesalers contributed data this week																	
Total exports																		
Total sales																		
Total Stock on Hand																		
SA & TAS																		
Total supermarket sales																		
Total non supermarket sales	# Data set not included because not enough SA wholesalers contributed data this week																	
Total exports																		
Total sales																		
Total Stock on Hand																		
VIC																		
Total supermarket sales																		
Total non supermarket sales	# Data set not included because not enough VIC wholesalers contributed data this week																	
Total exports																		
Total sales																		
Total Stock on Hand																		
WA																		
Total supermarket sales																		
Total non supermarket sales	# Data set not included because not enough WA wholesalers contributed data this week																	
Total exports																		
Total sales																		
Total Stock on Hand																		
Total																		
Total supermarket sales	5,697		718	6,414	56			56	102						5,798		718	6,516
Total non supermarket sales	26,108		820	26,928	1,204		66	1,270	2,309						28,297		940	29,237
Total exports	728			728											728			728
Total sales	32,533		1,538	34,071	1,260		66	1,326	2,411						34,823		1,658	36,481
Total Stock on Hand	16,288		931	17,219	1,626		93	1,719	3,125						19,244		1,100	20,344

