



# INFOCADO WEEKLY REPORT

2nd to 8th February 2008 (Wk 6)

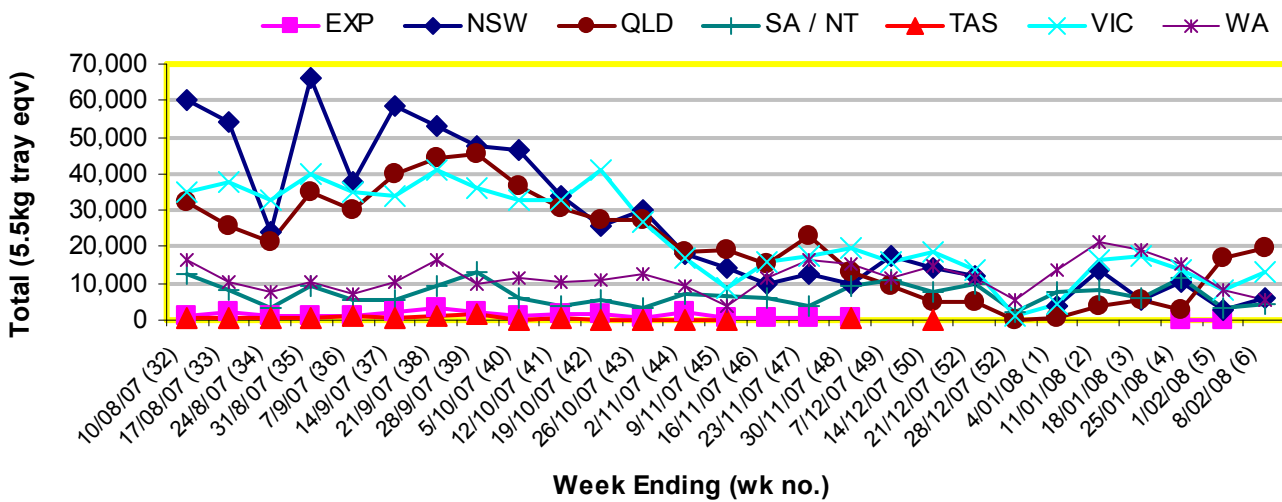
Green shading indicates dispatch data

Yellow shading indicates forecast data

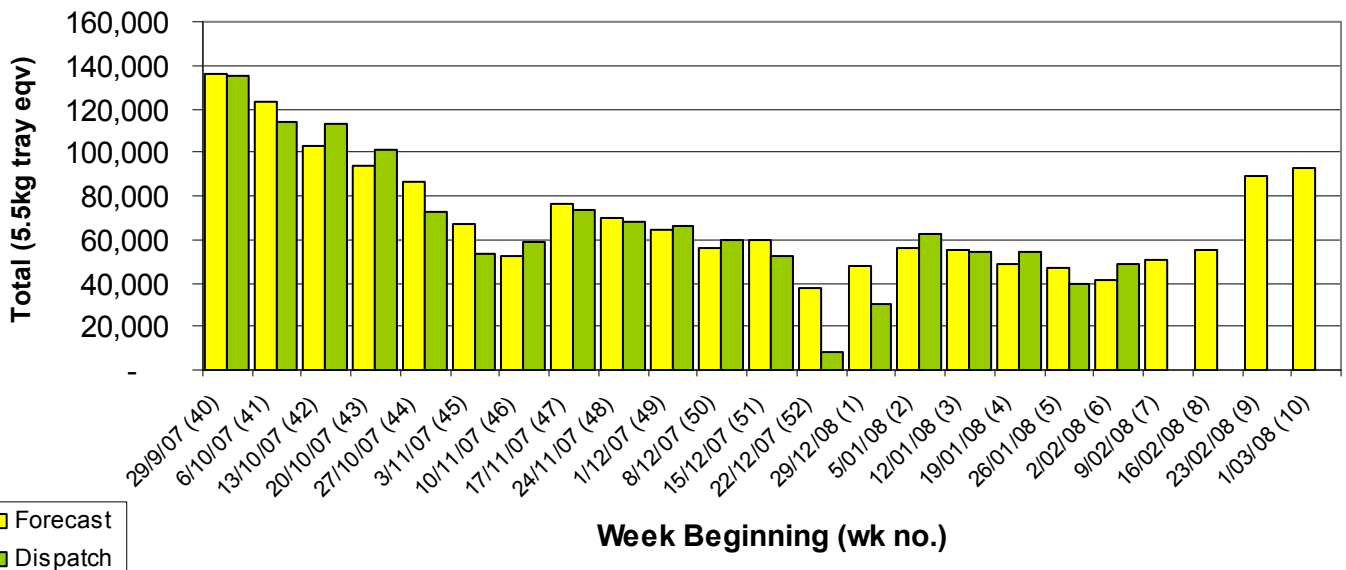
## Industry Dispatches 2nd to 8th February 2008 (Wk 6)

Dest. State	5.5kg	5.5kg	5.5kg	5.5kg	5.5kg	5.5kg	5.5kg	5.5kg	5.5kg	5.5kg	Bulk	P/PK	Other	5.5Kg Eqv Trays All
	<16	16	18	20	22	23	25	28	28+	Total	10Kg	Kg	Kg	Total
EXP														
NSW	20	284	600	1,366	211	799	584	852		4,716	851			6,263
QLD		97	492	1,651	1,920	2,070	4,665	3,852	132	14,879	2,517			19,455
SA / NT	72	54	1,209	2,079			5	192		3,724	149	2,200		4,395
TAS														
VIC	171	666	890	2,689	166	1,668	2,011	2,574	9	10,844	1,351			13,300
WA		419	964	1,175		1,539	827	461		5,385	180			5,712
<b>Total</b>	<b>263</b>	<b>1,520</b>	<b>4,155</b>	<b>8,960</b>	<b>2,297</b>	<b>6,081</b>	<b>8,279</b>	<b>7,852</b>	<b>141</b>	<b>39,548</b>	<b>5,048</b>	<b>2,200</b>		<b>49,126</b>

### Throughput Australian avocados by destination State Throughput 1st January 2008 to date = 289,771 5.5kg tray eqv



### Dispatch vs weekly forecast for Australian Avocados - all varieties and all packs (29th September 2007 to 7th March 2008)



### Major Capital City Weather Report – week ahead

City	Tue	Wed	Thu	Fri	Public Hols	School Holidays
Brisbane	25°	27°	28°	28°	Easter—21/3/08 & 24/3/08	5th Apr—13th Apr
Melbourne	25°	21°	23°	28°	Labour Day—10/3/08	21st Mar—6th Apr
Perth	36°	37°	38°	36°	Labour Day—3/3/08	12th Apr-27th Apr
Sydney	25°	24°	22°	23°	Easter—21/3/08 & 24/3/08	12th Apr—27th Apr

#### Forecast Data (Week 6-10)

Variety	Trays - Total	Bulk	P/Pk	Other	All - Total
	5.5Kg Eqv	10Kg	Kg	Kg	5.5Kg Eqv
Week 6—begin 2/02/08					
Hass	18,320	2,231	2,500		<b>22,831</b>
Lamb Hass	180				<b>180</b>
Reed	650	16			<b>679</b>
Shepard	15,500	1,150		400	<b>17,664</b>
<b>Week Total</b>	<b>34,650</b>	<b>3,397</b>	<b>2,500</b>	<b>400</b>	<b>41,354</b>
Week 7—begin 9/02/08					
Hass	15,632	1,256	2,200		<b>18,316</b>
Reed	498	14			<b>523</b>
Shepard	24,300	3,400	7,150	400	<b>31,855</b>
<b>Week Total</b>	<b>40,430</b>	<b>4,670</b>	<b>9,350</b>	<b>400</b>	<b>50,694</b>
Week 8—begin 16/02/08					
Hass	14,100	1,132	2,200		<b>16,558</b>
Lamb Hass	120				<b>120</b>
Reed	550	16			<b>579</b>
Shepard	30,300	3,250	7,150	800	<b>37,654</b>
Wurtz	100				<b>100</b>
<b>Week Total</b>	<b>45,170</b>	<b>4,398</b>	<b>9,350</b>	<b>800</b>	<b>55,011</b>
Week 9— begin 23/02/08					
Hass	6,900	402	2,200		<b>8,031</b>
Reed	200				<b>200</b>
Shepard	70,000	3,875	22,000	800	<b>81,190</b>
Wurtz	100				<b>100</b>
<b>Week Total</b>	<b>77,200</b>	<b>4,277</b>	<b>24,200</b>	<b>800</b>	<b>89,521</b>
Week 10— begin 1/03/08					
Hass	4,100	352	2,200		<b>5,140</b>
Shepard	73,000	5,750	22,000		<b>87,455</b>
<b>Week Total</b>	<b>77,100</b>	<b>6,102</b>	<b>24,200</b>	<b>0</b>	<b>92,595</b>

#### Dispatch Data (Week 6—begin 2/02/08)

Variety	Trays	Bulk	P/PK	Other	5.5Kg Eqv
	5.5kg eqv	10Kg	Kg	Kg	Total Trays
Gwen	53	15			<b>80</b>
Hass	15,133	1,150	2,200		<b>17,624</b>
Lamb Hass	183	4			<b>190</b>
Reed	756	404			<b>1,491</b>
Shepard	23,423	3,475			<b>29,741</b>
<b>Total</b>	<b>39,548</b>	<b>5,048</b>	<b>2,200</b>		<b>49,126</b>

#### Week 6 contributors

Avocados With Altitude  
 AvoLand  
 Avonova  
 Chislett Developments Pty Ltd  
 Coastal Avocados  
 Delroy Orchards  
 Gunnadoo Farm  
 Hilltop Mareeba  
 Kulnura Ambrosia Avocados  
 Lavers Orchards  
 Lone Gum Avocados  
 Mariners Rest  
 Midcoast Avocados  
 Mutchilba Valley  
 Natures Fruit Company  
 One Harvest  
 RM & KL Cornwall  
 Rob Farnsworth Pty Ltd  
 Rocky Creek Orchards  
 Simpsons Farms Pty Ltd (1)  
 VP & EA Farrell  
 Zanfar Pty Ltd

#### New Zealand Avocado Exports—Forecast v Import Statistics (5.5kg eqv trays)

Export Dest'n	Aug	Sep	Oct	Nov	Dec	Jan	Feb	Mar	Apr	Total to date
<b>NZ Export Forecast</b>		100,000	350,000	650,000	650,000	350,000	375,000	25,000		<b>2,500,000</b>
<b>Australia</b>	355		163,000	471,000	464,166	Avail mid Feb				<b>1,098,521</b>
<b>USA</b>		42,483	146,176	101,451	146,742	32,727				<b>469,579</b>
<b>Japan</b>	1,997	19,044	41,144	53,557	57,757	14,834+				<b>188,333</b>
<b>Total</b>	<b>2,352</b>	<b>61,527</b>	<b>350,320</b>	<b>626,008</b>	<b>668,665</b>	<b>47,561</b>				<b>1,756,433</b>

#### Percentage dispatched by region (Based on seasonal forecast - 2008)

