



# INFOCADO WEEKLY REPORT

9th to 15th February 2008 (Wk 7)

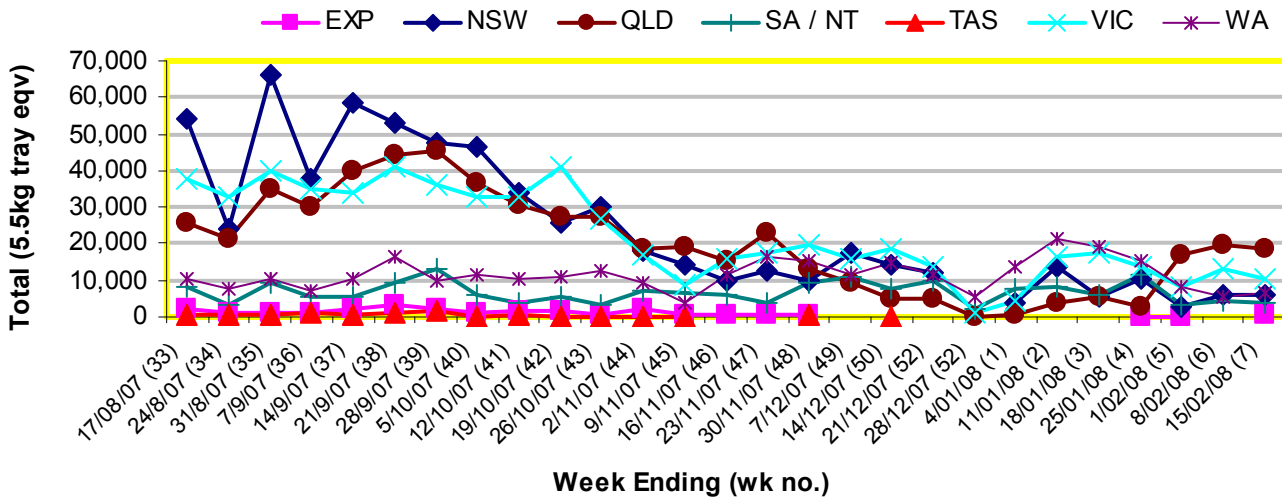
Green shading indicates dispatch data

Yellow shading indicates forecast data

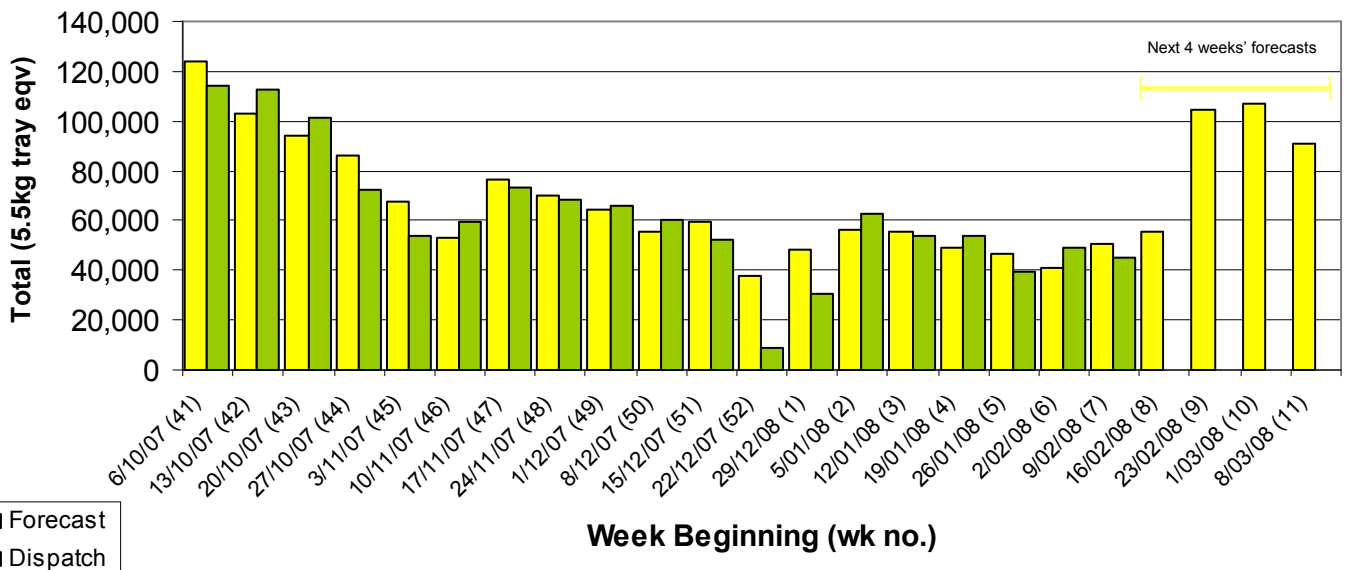
## Industry Dispatches 9th to 15th February 2008 (Wk 7)

Dest. State	5.5kg	5.5kg	5.5kg	5.5kg	5.5kg	5.5kg	5.5kg	5.5kg	5.5kg	5.5kg	Bulk	P/PK	Other	5.5Kg Eqv Trays All
	<16	16	18	20	22	23	25	28	28+	Total	10Kg	Kg	Kg	Total
EXP									584	584				584
NSW	3	221	623	1,224	203	1,242	1,254	541		5,311	257			5,778
QLD	10	136	405	1,461	728	2,805	3,522	2,156		11,223	3,983			18,465
SA / NT			1,323	1,685			144	288	144	3,584				3,584
TAS														
VIC	85	552	1,167	2,706	273	656	870	1,289		7,598	1,404			10,151
WA		245	421	1,038		1,781	1,057	771		5,313	419	2,200		6,475
<b>Total</b>	<b>98</b>	<b>1,154</b>	<b>3,939</b>	<b>8,114</b>	<b>1,204</b>	<b>6,628</b>	<b>6,991</b>	<b>5,485</b>		<b>33,613</b>	<b>6,063</b>	<b>2,200</b>		<b>45,037</b>

## Throughput Australian avocados by destination State Throughput 1st January 2008 to date = 334,807 5.5kg tray eqv



## Dispatch vs weekly forecast for Australian Avocados - all varieties and all packs (6th October 2007 to 14th March 2008)



### Major Capital City Weather Report – week ahead

City	Tue	Wed	Thu	Fri	Public Hols	School Holidays
Brisbane	27°	26°	28°	29°	Easter—21/3/08 & 24/3/08	5th Apr—13th Apr
Melbourne	34°	22°	24°	22°	Labour Day—10/3/08	21st Mar—6th Apr
Perth	26°	27°	26°	27°	Labour Day—3/3/08	12th Apr-27th Apr
Sydney	25°	27°	27°	30°	Easter—21/3/08 & 24/3/08	12th Apr—27th Apr

#### Forecast Data (Week 7-11)

Variety	Trays - Total	Bulk	P/Pk	Other	All - Total
	5.5Kg Eqv	10Kg	Kg	Kg	5.5Kg Eqv
Week 7—begin 9/02/08					
Hass	15,632	1,256	2,200		<b>18,316</b>
Reed	498	14			<b>523</b>
Shepard	24,300	3,400	7,150	400	<b>31,855</b>
<b>Week Total</b>	<b>40,430</b>	<b>4,670</b>	<b>9,350</b>	<b>400</b>	<b>50,694</b>
Week 8—begin 16/02/08					
Hass	12,700	1,162	2,200		<b>15,213</b>
Lamb Hass	120				<b>120</b>
Reed	550	16			<b>579</b>
Shepard	31,400	3,550	7,150	800	<b>39,300</b>
Wurtz	100				<b>100</b>
<b>Week Total</b>	<b>44,870</b>	<b>4,728</b>	<b>9,350</b>	<b>800</b>	<b>55,311</b>
Week 9—begin 23/02/08					
Hass	5,900	346	2,200		<b>6,929</b>
Reed	200				<b>200</b>
Shepard	84,600	4,725	22,000	800	<b>97,336</b>
Wurtz	100				<b>100</b>
<b>Week Total</b>	<b>90,800</b>	<b>5,071</b>	<b>24,200</b>	<b>800</b>	<b>104,565</b>
Week 10— begin 1/03/08					
Hass	4,100	296	2,200		<b>5,038</b>
Shepard	86,000	6,550	22,000	1,200	<b>102,127</b>
<b>Week Total</b>	<b>90,100</b>	<b>6,846</b>	<b>24,200</b>	<b>1,200</b>	<b>107,165</b>
Week 11— begin 8/03/08					
Hass	3,800	296	2,200		<b>4,738</b>
Shepard	71,000	8,100		1,200	<b>85,945</b>
<b>Week Total</b>	<b>74,800</b>	<b>8,396</b>	<b>2,200</b>	<b>1,200</b>	<b>90,683</b>

#### Dispatch Data (Week 7—begin 9/02/08)

Variety	Trays	Bulk	P/PK	Other	5.5Kg Eqv
	5.5kg eqv	10Kg	Kg	Kg	Total Trays
Hass	12,306	692	2,200		<b>13,964</b>
Shepard	21,109	5,354			<b>30,844</b>
Wurtz	198	17			<b>229</b>
<b>Total</b>	<b>33,613</b>	<b>6,063</b>	<b>2,200</b>		<b>45,037</b>

#### Week 7 contributors

Avocados With Altitude  
 AvoLand  
 Coastal Avocados  
 Delroy Orchards  
 Gunnadoo Farm  
 ID & AM Leighton  
 JC & SK Smythe Total  
 Kulnura Ambrosia Avocados  
 Lavers Orchards  
 Midcoast Avocados  
 Natures Fruit Company  
 Rocky Creek Orchards  
 Simpsons Farms Pty Ltd  
 Sunfresh  
 Zanfar Pty Ltd

#### New Zealand Avocado Exports—Forecast v Import Statistics (5.5kg eqv trays)

Export Dest'n	Aug	Sep	Oct	Nov	Dec	Jan	Feb	Mar	Apr	Total to date
<b>NZ Export Forecast</b>		100,000	350,000	650,000	650,000	350,000	375,000	25,000		<b>2,500,000</b>
<b>Australia</b>	355		163,000	471,000	464,166	445,399				<b>1,543,920</b>
<b>USA</b>		42,483	146,176	101,451	146,742	32,727				<b>469,579</b>
<b>Japan</b>	1,997	19,044	41,144	53,557	57,757	14,834+				<b>188,333</b>
<b>Total</b>	<b>2,352</b>	<b>61,527</b>	<b>350,320</b>	<b>626,008</b>	<b>668,665</b>	<b>492,960</b>				<b>2,201,832</b>

#### Percentage dispatched by region (Based on seasonal forecast - 2008)

