



# INFOCADO WEEKLY REPORT

16th to 22nd February 2008 (Wk 8)

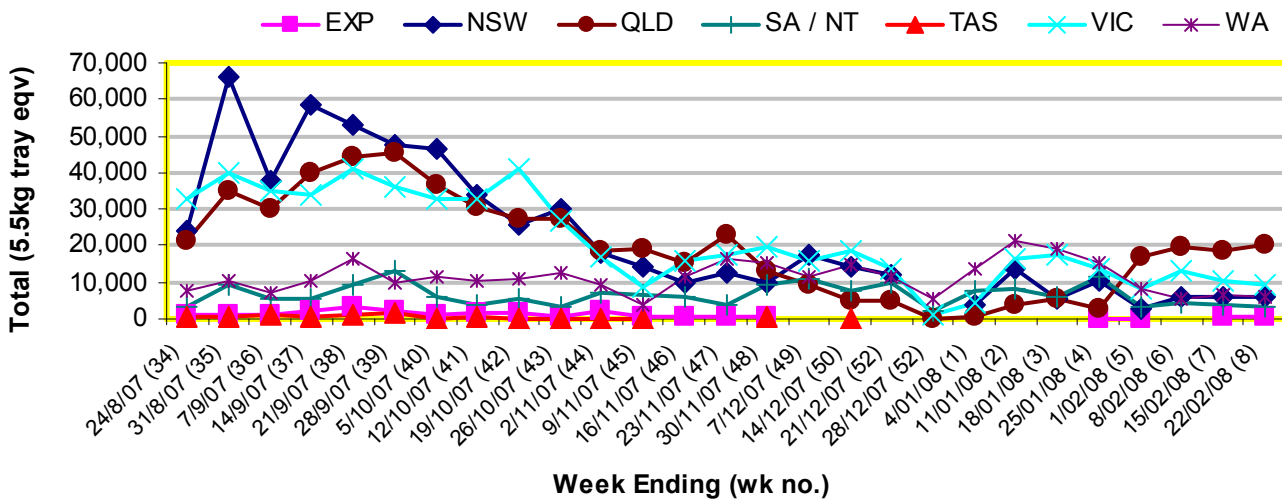
Green shading indicates dispatch data

Yellow shading indicates forecast data

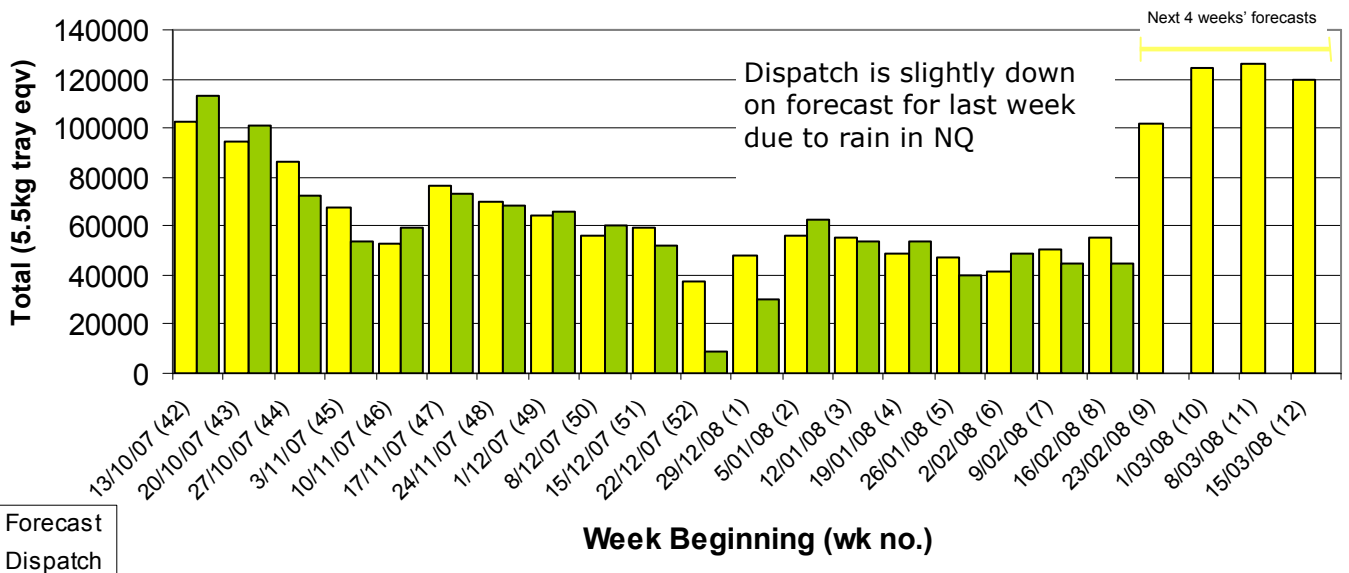
## Industry Dispatches 16th to 22nd February 2008 (Wk 8)

Dest. State	5.5kg									Total	Bulk 10Kg	P/PK Kg	Oil Kg	Other Kg	5.5Kg Eqv Trays All Total
	<16	16	18	20	22	23	25	28	28+						
EXP									660	660					660
NSW	4	269	518	823	114	2,421	490	586	32	5,257	408				5,999
QLD	36	356	477	2,108	3,798	2,793	2,403	1,624	79	13,674	2,584	7,073	1,000	1,300	20,076
SA / NT		73	520	638			147	1,568	491	3,437					3,437
TAS															
VIC	223	650	1,492	3,095	128	857	668	430		7,543	824				9,041
WA		186	378	786		1,176	1,321	730	17	4,594	475	1,800			5,785
<b>Total</b>	<b>263</b>	<b>1,534</b>	<b>3,385</b>	<b>7,450</b>	<b>4,040</b>	<b>7,394</b>	<b>6,450</b>	<b>4,521</b>	<b>128</b>	<b>35,165</b>	<b>4,291</b>	<b>8,873</b>	<b>1,000</b>	<b>1,300</b>	<b>44,998</b>

## Throughput Australian avocados by destination State Throughput 1st January 2008 to date = 379,805 5.5kg tray eqv



## Dispatch vs weekly forecast for Australian Avocados - all varieties and all packs (13th October 2007 to 21st March 2008)



### Major Capital City Weather Report – week ahead

City	Tue	Wed	Thu	Fri	Public Hols	School Holidays
Brisbane	25°	27°	29°	21°	Easter—21/3/08 & 24/3/08	5th Apr—13th Apr
Melbourne	23°	22°	19°	21°	Labour Day—10/3/08	21st Mar—6th Apr
Perth	37°	37°	38°	38°	Labour Day—3/3/08	12th Apr-27th Apr
Sydney	26°	26°	23°	21°	Easter—21/3/08 & 24/3/08	12th Apr—27th Apr

#### Forecast Data (Week 7-11)

Variety	Trays - Total	Bulk	P/Pk	Other	All - Total
	5.5Kg Eqv	10Kg	Kg	Kg	5.5Kg Eqv
Week 8—begin 16/02/08					
Hass	12,700	1,162	2,200		<b>15,213</b>
Lamb Hass	120				<b>120</b>
Reed	550	16			<b>579</b>
Shepard	31,400	3,550	7,150	800	<b>39,300</b>
Wurtz	100				<b>100</b>
<b>Week Total</b>	<b>44,870</b>	<b>4,728</b>	<b>9,350</b>	<b>800</b>	<b>55,311</b>
Week 9—begin 23/02/08					
Hass	6,600	546	1,600		<b>7,884</b>
Reed	1,300				<b>1,300</b>
Shepard	80,100	4,500	22,000	800	<b>92,427</b>
Wurtz	100				<b>100</b>
<b>Week Total</b>	<b>88,100</b>	<b>5,046</b>	<b>23,600</b>	<b>800</b>	<b>101,711</b>
Week 10—begin 1/03/08					
Hass	4,000	396	1,600		<b>5,011</b>
Shepard	100,200	5,050	55,000	1,200	<b>119,600</b>
<b>Week Total</b>	<b>104,200</b>	<b>5,446</b>	<b>56,600</b>	<b>1,200</b>	<b>124,611</b>
Week 11— begin 8/03/08					
Hass	3,800	396	1,600		<b>4,811</b>
Shepard	99,400	6,325	55,000	1,200	<b>121,118</b>
<b>Week Total</b>	<b>103,200</b>	<b>6,721</b>	<b>56,600</b>	<b>1,200</b>	<b>125,929</b>
Week 12— begin 15/03/08					
Hass	1,600	300			<b>2,145</b>
Pinkerton	500				<b>500</b>
Shepard	95,700	6,050	55,000	1,500	<b>116,973</b>
<b>Week Total</b>	<b>97,800</b>	<b>6,350</b>	<b>55,000</b>	<b>1,500</b>	<b>119,618</b>

#### Dispatch Data (Week 8—begin 16/02/08)

Variety	Trays	Bulk	P/PK	Oil	Other	5.5Kg Eqv
	5.5kg eqv	10Kg	Kg	Kg	Kg	Total Trays
Hass	8,509	570	1,800			<b>9,872</b>
Reed	654	102				<b>839</b>
Shepard	25,871	3,604	7,073	1,000	1,300	<b>34,128</b>
Wurtz	131	15				<b>158</b>
<b>Total</b>	<b>35,165</b>	<b>4,291</b>	<b>8,873</b>	<b>1,000</b>	<b>1,300</b>	<b>44,998</b>

#### Week 8 contributors

Avocado Ridge  
 Avocados With Altitude  
 AvoLand  
 Battistin Orchards  
 Coastal Avocados  
 Delroy Orchards  
 Donovan Avocados  
 Gunnadoo Farm  
 Hilltop Mareeba  
 JC & SK Smythe  
 Kulnura Ambrosia Avocados  
 Lavers Orchards  
 Lone Gum Avocados  
 Mariners Rest  
 Midcoast Avocados  
 Mutchilba Valley  
 Natures Fruit Company  
 One Harvest  
 R & M Waterman  
 Simpsons Farms Pty Ltd  
 Sunfresh  
 VP & EA Farrell

#### New Zealand Avocado Exports—Forecast v Import Statistics (5.5kg eqv trays)

Export Dest'n	Aug	Sep	Oct	Nov	Dec	Jan	Feb	Mar	Apr	Total to date
<b>NZ Export Forecast</b>		100,000	350,000	650,000	650,000	350,000	375,000	25,000		<b>2,500,000</b>
<b>Australia</b>	355		163,000	471,000	464,166	445,399	Avail mid Mar			<b>1,543,920</b>
<b>USA</b>		42,483	146,176	101,451	146,742	32,727				<b>469,579</b>
<b>Japan</b>	1,997	19,044	41,144	53,557	57,757	14,834+				<b>188,333</b>
<b>Total</b>	<b>2,352</b>	<b>61,527</b>	<b>350,320</b>	<b>626,008</b>	<b>668,665</b>	<b>492,960</b>				<b>2,201,832</b>

#### Percentage dispatched by region (Based on seasonal forecast - 2008)

