



# INFOCADO WEEKLY REPORT

23rd to 29th February 2008 (Wk 9)

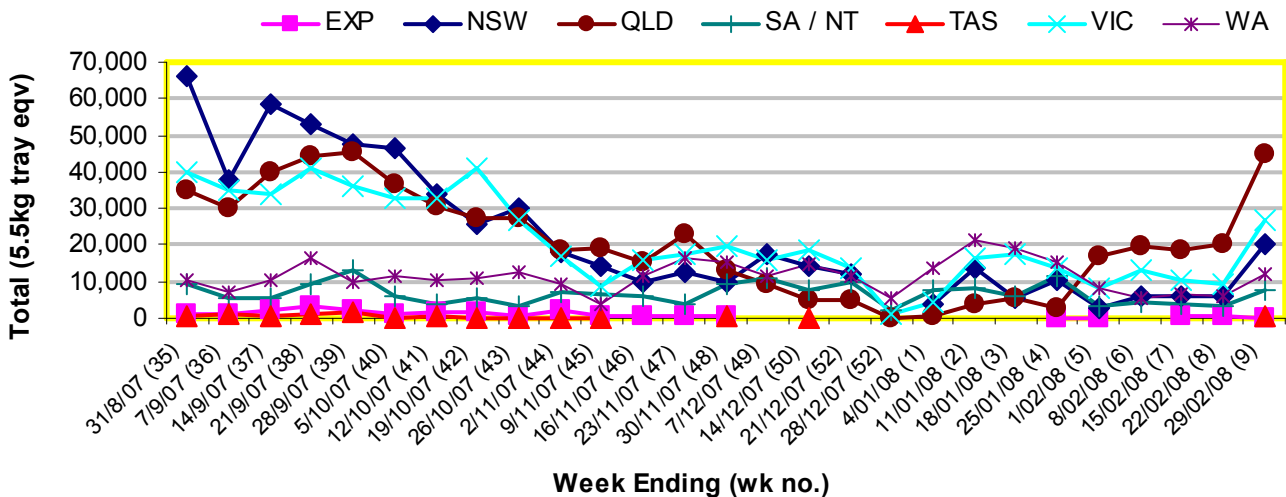
Green shading indicates dispatch data

Yellow shading indicates forecast data

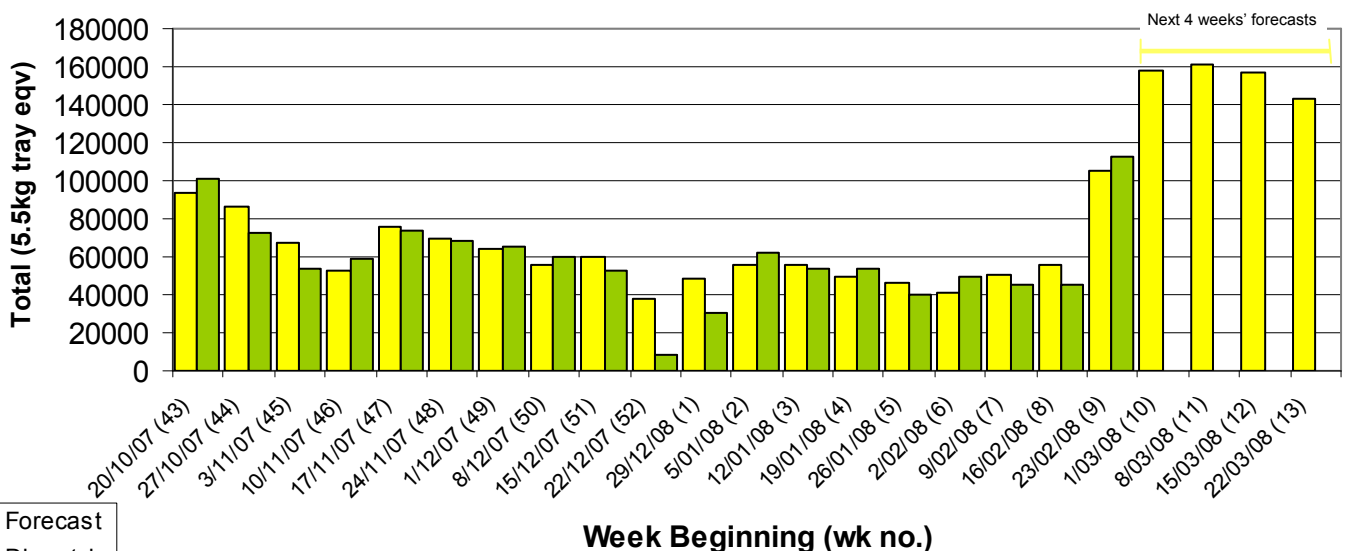
## Industry Dispatches 23rd to 29th February 2008 (Wk 9)

Dest. State	5.5kg	5.5kg	5.5kg	5.5kg	5.5kg	5.5kg	5.5kg	5.5kg	5.5kg	5.5kg	Bulk	P/PK	Proc	5.5Kg Eqv Trays All				
	<16	16	18	20	22	23	25	28	28+	Total				10Kg	Kg	Kg	Total	
EXP									220						220			
NSW	12	633	897	3,305	3,341	3,230	4,144	1,924						17,486	629	9,944		20,438
QLD	5	658	726	1,651	3,125	3,606	5,174	3,808	85					18,838	13,604	4,884	2,520	44,919
SA / NT		71	176	435	624	645	4,120	464						6,535	456	2,352		7,792
TAS					150		314							464				464
VIC	134	538	3,142	8,697	2,392	2,268	2,834	1,373						21,378	2,112	7,511		26,584
WA		66	254	982		4,350	3,744	708	6					10,110	729	3,696		12,107
<b>Total</b>	<b>151</b>	<b>1,966</b>	<b>5,195</b>	<b>15,070</b>	<b>9,632</b>	<b>14,099</b>	<b>20,330</b>	<b>8,497</b>	<b>91</b>					<b>75,031</b>	<b>17,530</b>	<b>28,387</b>	<b>2,520</b>	<b>112,523</b>

## Throughput Australian avocados by destination State Throughput 1st January 2008 to date = 492,328 5.5kg tray eqv



## Dispatch vs weekly forecast for Australian Avocados - all varieties and all packs (20th October 2007 to 28th March 2008)



### Major Capital City Weather Report – week ahead

City	Tue	Wed	Thu	Fri	Public Hols	School Holidays
Brisbane	26°	26°	27°	28°	Easter—21/3/08 & 24/3/08	5th Apr—13th Apr
Melbourne	23°	30°	34°	31°	Labour Day—10/3/08	21st Mar—6th Apr
Perth	32°	30°	29°	29°	Easter—21/3/08 & 24/3/08	12th Apr-27th Apr
Sydney	26°	24°	26°	27°	Easter—21/3/08 & 24/3/08	12th Apr—27th Apr

### Forecast Data (Week 9-13)

Variety	Trays - Total	Bulk	P/Pk	Other	All - Total
	5.5Kg Eqv	10Kg	Kg	Kg	5.5Kg Eqv
Week 9—begin 23/02/08					
Hass	6,600	546	1,600		<b>7,884</b>
Reed	1,300				<b>1,300</b>
Shepard	83,100	4,725	22,000	800	<b>95,836</b>
Wurtz	100				<b>100</b>
<b>Week Total</b>	<b>91,100</b>	<b>5,271</b>	<b>23,600</b>	<b>800</b>	<b>105,120</b>
Week 10—begin 1/03/08					
Hass	5,700	336	2,000		<b>6,675</b>
Shepard	114,082	14,350	57,000	1,200	<b>150,755</b>
<b>Week Total</b>	<b>119,782</b>	<b>14,686</b>	<b>59,000</b>	<b>1,200</b>	<b>157,429</b>
Week 11— begin 8/03/08					
Hass	3,500	236	1,600		<b>4,220</b>
Shepard	119,927	14,425	58,000	2,000	<b>157,063</b>
<b>Week Total</b>	<b>123,427</b>	<b>14,661</b>	<b>59,600</b>	<b>2,000</b>	<b>161,283</b>
Week 12— begin 15/03/08					
Hass	850	120			<b>1,068</b>
Pinkerton	500				<b>500</b>
Shepard	118,598	14,150	58,000	2,000	<b>155,234</b>
<b>Week Total</b>	<b>119,948</b>	<b>14,270</b>	<b>58,000</b>	<b>2,000</b>	<b>156,802</b>
Week 13— begin 22/03/08					
Hass	600	100			<b>782</b>
Shepard	105,598	14,200	58,000	1,500	<b>142,234</b>
<b>Week Total</b>	<b>106,198</b>	<b>14,300</b>	<b>58,000</b>	<b>1,500</b>	<b>143,016</b>

### Dispatch Data (Week 9—begin 23/02/08)

Variety	Trays	Bulk	P/PK	Proc	5.5Kg Eqv
	5.5kg eqv	10Kg	Kg	Kg	Total Trays
Hass	7,092	158	2,800		<b>7,888</b>
Reed	783	72			<b>914</b>
Shepard	67,156	17,300	25,587	2,520	<b>103,721</b>
<b>Total</b>	<b>75,031</b>	<b>17,530</b>	<b>28,387</b>	<b>2,520</b>	<b>112,523</b>

### Week 9 contributors

Avocado Ridge  
 Avocados With Altitude  
 AvoLand  
 Battistin Orchards  
 Coastal Avocados  
 Delroy Orchards  
 Donovan Avocados  
 Gunnadoo Farm  
 JC & SK Smythe  
 Kulnura Ambrosia Avocados  
 Lavers Orchards  
 Lone Gum Avocados  
 Mariners Rest  
 Natures Fruit Company  
 One Harvest  
 R & M Waterman  
 Simpsons Farms Pty Ltd  
 Sunfresh  
 Theart Farming Pty Ltd  
 Tinaroo Falls Avocado Trust

### New Zealand Avocado Exports—Forecast v Import Statistics (5.5kg eqv trays)

Export Dest'n	Aug	Sep	Oct	Nov	Dec	Jan	Feb	Mar	Apr	Total to date
<b>NZ Export Forecast</b>		100,000	350,000	650,000	650,000	350,000	375,000	25,000		<b>2,500,000</b>
<b>Australia</b>	355		163,000	471,000	464,166	445,339	Avail mid Mar			<b>1,543,860</b>
<b>USA</b>		42,484	146,175	101,451	146,742	32,727				<b>469,579</b>
<b>Japan</b>	1,996	19,043	51,145	53,557	57,757	19,325				<b>202,823</b>
<b>Total</b>	<b>2,351</b>	<b>61,526</b>	<b>360,320</b>	<b>626,008</b>	<b>668,665</b>	<b>497,391</b>				<b>2,216,262</b>

### Percentage dispatched by region (Based on seasonal forecast - 2008)

