



INFOCADO WEEKLY REPORT

17th to 23rd November 2007 (Wk 47)

Green shading indicates dispatch data

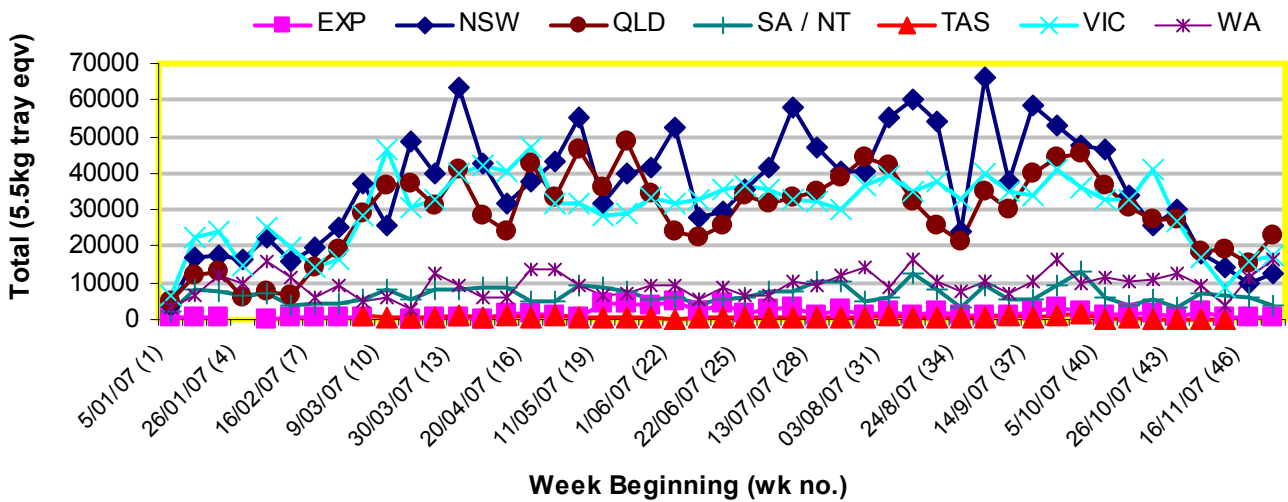
Yellow shading indicates forecast data

Industry Dispatches 17th to 23rd November (Wk 47)

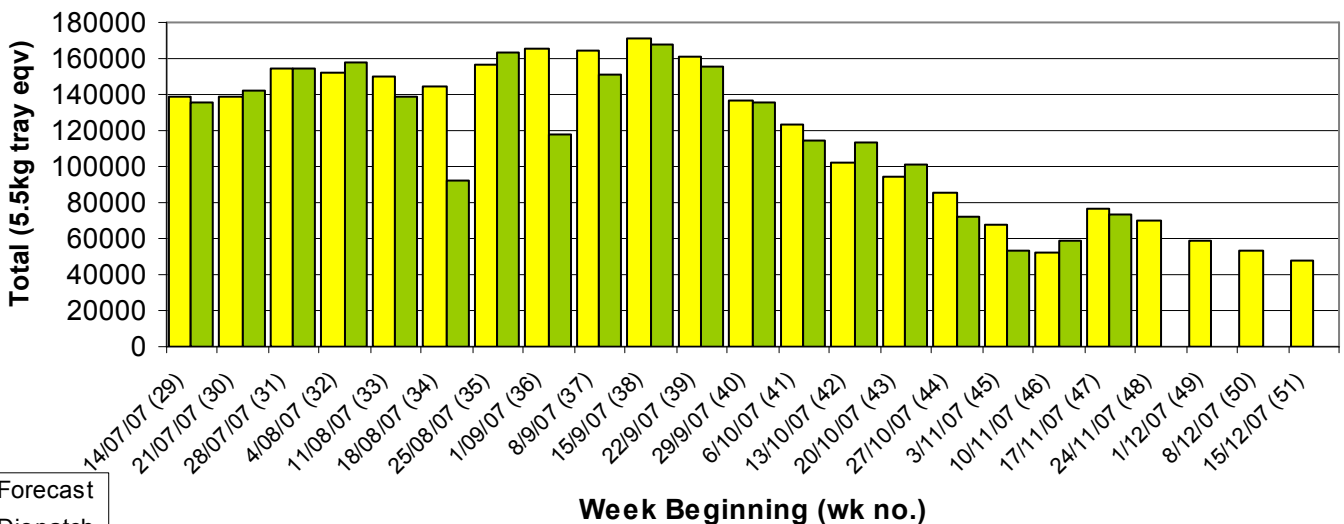
Dest. State	5.5kg	5.5kg	5.5kg	5.5kg	5.5kg	5.5kg	5.5kg	5.5kg	5.5kg	5.5kg	Bulk	P/PK	Other	5.5Kg Eqv Trays All
	<16	16	18	20	22	23	25	28	28+	Total	10Kg	Kg	Kg	Total
EXP								144	119	263	50			354
NSW	7	211	1,161	1,055	102	1,229	1,045	1,782	41	6,633	3,227		300	12,555
QLD	6	134	1,091	1,225	2,975	1,906	4,295	2,867	14	14,513	3,256	12,495		22,705
SA / NT	132	123	237	534	42	170	233	1,502		2,973	519			3,917
TAS														
VIC	40	319	2,053	3,248	211	3,469	1,910	2,089	27	13,366	2,281		3	17,514
WA		7	1,471	1,918		4,437	4,414	1,020		13,267	1,212	4,800		16,344
Total	185	794	6,013	7,980	3,330	11,211	11,897	9,404	201	51,015	10,545	17,295	303	73,388

Throughput Australian avocados by destination State

Throughput 1st January 2007 to date = 5,368,513 5.5kg tray eqv



Dispatch vs weekly forecast for Australian Avocados - all varieties and all packs (14th July to 21st December 2007)



Major Capital City Weather Report – week ahead

City	Tue	Wed	Thu	Fri	Public Hols	School Holidays
Brisbane	27°	26°	28°	27°	December 25-26 Christmas & Boxing Days	15th Dec-28th Jan
Melbourne	24°	29°	29°	27°	December 25-26 Christmas & Boxing Days	22nd Dec-28th Jan
Perth	29°	33°	25°	21°	December 25-26 Christmas & Boxing Days	14th Dec—3rd Feb
Sydney	23°	24°	25°	25°	December 25-26 Christmas & Boxing Days	22nd Dec—28th Jan

Forecast Data (Week 46-50)

Variety	Trays - Total	Bulk	P/Pk	Other	All - Total
	5.5Kg Eqv	10Kg	Kg	Kg	5.5Kg Eqv
Week 47—begin 17/11/07					
Gwen	520	40			593
Hass	57,078	9,006	6,500	250	74,680
Lamb Hass	800	30			855
Week Total	58,398	9,076	6,500	250	76,127
Week 48—begin 24/11/07					
Gwen	2,440	270			2,931
Hass	49,070	7,895	6,500	200	64,643
Lamb Hass	1,960	230		100	2,396
Week Total	53,470	8,395	6,500	300	69,971
Week 49—begin 1/12/07					
Gwen	940	70			1,067
Hass	42,260	6,571	6,650	200	55,452
Lamb Hass	450	30			505
Reed	550	60			659
Sharwil	500	200			864
Week Total	44,700	6,931	6,650	200	58,547
Week 50— begin 8/12/07					
Gwen	1,000	80			1,145
Hass	39,090	6,051	2,650	200	50,610
Lamb Hass	230	30		100	303
Reed	450	60			559
Sharwil	500	200			864
Week Total	41,270	6,421	2,650	300	53,482
Week 51— begin 15/12/07					
Gwen	1,100	90			1,264
Hass	36,594	5,232	200		46,143
Reed	500	60			609
Week Total	38,194	5,382	200	0	48,015

Dispatch Data (Week 47—begin 17/11/07)

Variety	Trays	Bulk	P/PK	Other	5.5Kg Eqv
	5.5kg eqv	10Kg	Kg	Kg	Total Trays
Gwen	743	97	0	0	919
Hass	47,957	10,068	17,295	303	69,462
Lamb Hass	1,739	318	0	0	2,317
Reed	381	43	0	0	459
Sharwil	88	13	0	0	112
Wurtz	107	6	0	0	118
Grand Total	51,015	10,545	17,295	303	73,388

Week 47 contributors

AvoLand
 Avonova
 Balmoral Orchard
 C F Fechner
 Chinoola Orchards
 Coastal Avocados
 Delroy Orchards
 DJ Tottenham
 Green Nugget Orchards
 Karri ry Produce
 Merrinee Farms
 Midcoast Avocados
 Natures Fruit Company
 One Harvest
 RM & KL Cornwall
 Rob Farnsworth Pty Ltd
 Summerland House With No Steps
 Sunfresh
 Sunnyspot Packhouse PL
 Sunrise Avocados
 Tam MT Farm Management
 VP & EA Farrell
 WJ Row

Percentage dispatched by region (Based on seasonal forecast - 2007)

