



INFOCADO WEEKLY REPORT

8th to 14th December 2007 (Wk 50)

Green shading indicates dispatch data

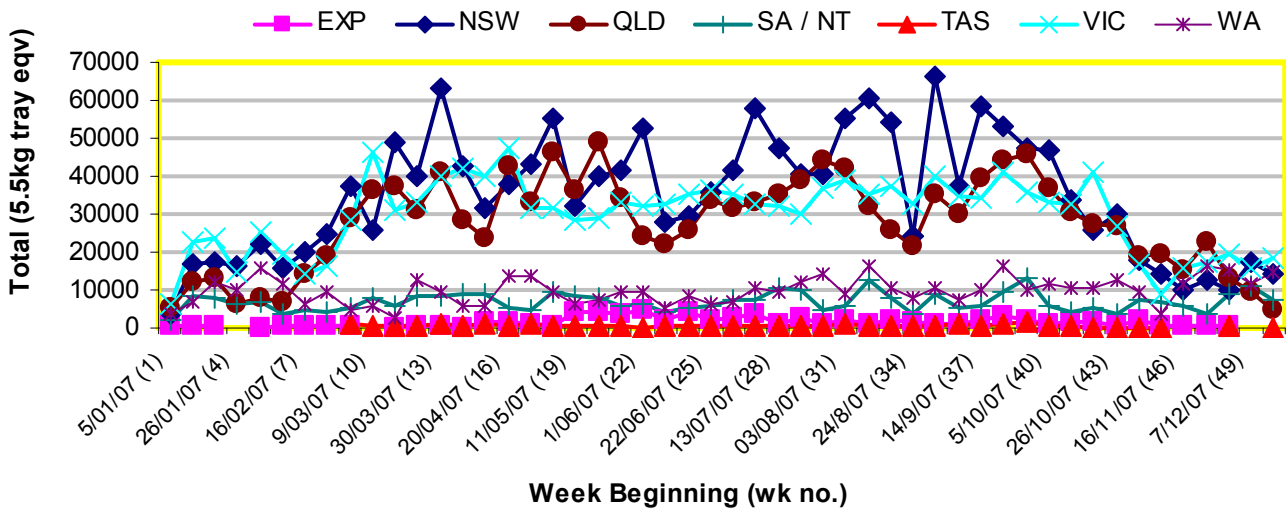
Yellow shading indicates forecast data

Industry Dispatches 8th to 14th December (Wk 50)

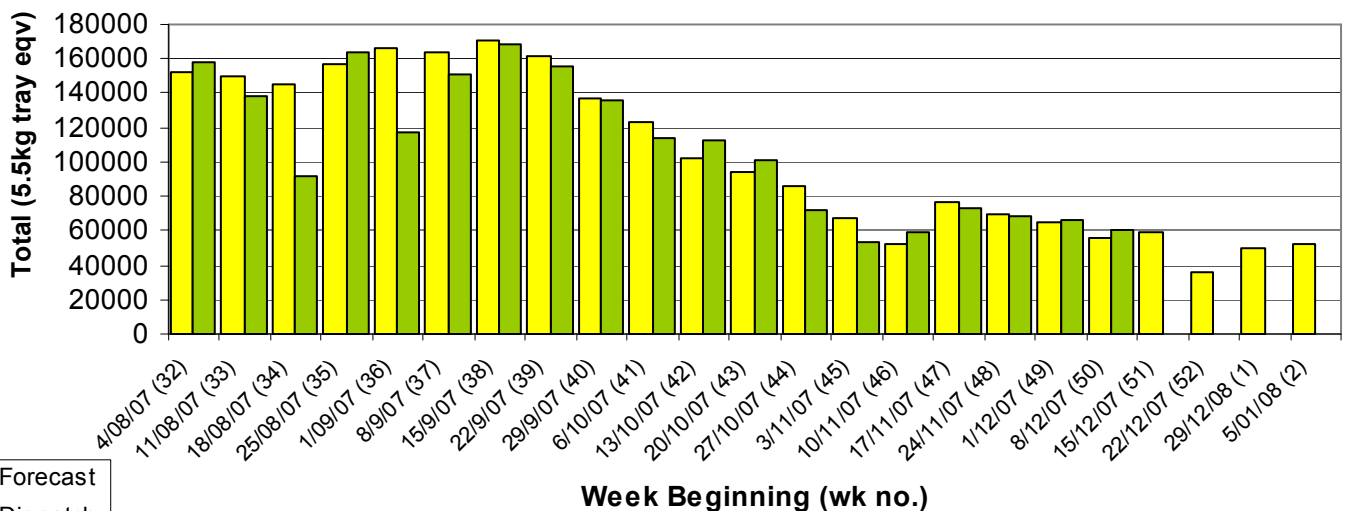
Dest. State	5.5kg	5.5kg	5.5kg	5.5kg	5.5kg	5.5kg	5.5kg	5.5kg	5.5kg	5.5kg	Bulk	P/PK	Other	5.5Kg Eqv Trays All
	<16	16	18	20	22	23	25	28	28+	Total	10Kg	Kg	Kg	Total
EXP														
NSW	2,038	694	1,170	1,844	17	1,030	1,369	1,780	12	9,954	2,479			14,461
QLD	590	196	265	493	55	927	626	395	13	3,560	612			4,673
SA / NT	362	23	1,508	1,088		1,380	476	1,739		6,576	512			7,507
TAS	240									240				240
VIC	1,837	693	1,754	2,645	80	2,851	2,104	2,053	152	14,169	2,286			18,325
WA		69	294	1,135		5,125	3,384	1,698		11,705	1,384	3,990		14,946
Total	5,067	1,675	4,991	7,205	152	11,313	7,959	7,665	177	46,204	7,273	3,990		60,153

Throughput Australian avocados by destination State

Throughput 1st January 2007 to date = 5,562,707 5.5kg tray eqv



Dispatch vs weekly forecast for Australian Avocados - all varieties and all packs (4th August 2007 to 12th January 2008)



Major Capital City Weather Report – week ahead

City	Tue	Wed	Thu	Fri	Public Hols	School Holidays
Brisbane	27°	28°	28°	28°	December 25-26 Christmas & Boxing Days	15th Dec-28th Jan
Melbourne	29°	31°	28°	27°	December 25-26 Christmas & Boxing Days	22nd Dec-28th Jan
Perth	24°	25°	24°	26°	December 25-26 Christmas & Boxing Days	14th Dec—3rd Feb
Sydney	22°	24°	25°	27°	December 25-26 Christmas & Boxing Days	22nd Dec—28th Jan

Forecast Data (Week 50-2)

Variety	Trays - Total	Bulk	P/Pk	Other	All - Total
	5.5Kg Eqv	10Kg	Kg	Kg	5.5Kg Eqv
Week 50—begin 8/12/07					
Gwen	1,704	101			1,888
Hass	37,512	5,896	1,150	200	48,477
Lamb Hass	450	50		100	559
Reed	3,450	360			4,105
Sharwil	500	200			864
Week Total	43,616	6,607	1,150	300	55,893
Week 51—begin 15/12/07					
Gwen	1,730	115			1,939
Hass	42,521	5,466	250	100	52,522
Lamb Hass	220	20			256
Reed	4,300	260		350	4,837
Wurtz	20	1			22
Week Total	48,791	5,862	250	450	59,576
Week 52—begin 22/12/07					
Gwen	1,500	90			1,664
Hass	25,188	4,794	150		33,931
Lamb Hass	110	10			128
Reed	600	60			709
Week Total	27,398	4,954	150	0	36,432
Week 1—begin 29/12/07					
Gwen	1,300	90			1,464
Hass	38,588	5,040	200		47,788
Lamb Hass	220	20			256
Reed	600	60			709
Week Total	40,708	5,210	200	0	50,217
Week 2—begin 5/01/08					
Gwen	1,100	90			1,264
Hass	40,238	5,410	150		50,101
Lamb Hass	220	20			256
Reed	450	70			577
Week Total	42,008	5,590	150	0	52,199

Dispatch Data (Week 50—begin 8/12/07)

Variety	Trays	Bulk	P/PK	Other	5.5Kg Eqv
	5.5kg eqv	10Kg	Kg	Kg	Total Trays
Gwen	1,447	223			1,852
Hass	37,518	6,428	3,990		49,930
Lamb Hass	471	29			524
Reed	6,379	577			7,428
Wurtz	389	16			418
Total	46,204	7,273	3,990		60,153

Week 50 contributors

AvoLand
 Avonova
 C F Fechner
 Chinoola Orchards
 Chislett Developments Pty Ltd
 Coastal Avocados
 Delroy Orchards
 Karri Country Produce
 Kulnura Ambrosia Avocados
 Merrinee Farms
 Midcoast Avocados
 Natures Fruit Company
 p2p business solutions
 Rob Farnsworth Pty Ltd
 Sunfresh
 Sunnyspot Packhouse PL
 Tam MT Farm Management
 Vitor Marketing Pty Ltd
 VP & EA Farrell
 WJ Row

New Zealand Avocado Exports—Forecast v Import Statistics ('000 5.5kg eqv trays)

Export Dest'n	Aug	Sep	Oct	Nov	Dec	Jan	Feb	Mar	Apr	Total to date
NZ Export Forecast		100,000	350,000	600,000	550,000	600,000	450,000	140,000	10,000	2,800,000
Australia	355		163,000	471,000						634,355
USA		51,500	71,500	26,500	35,000 to 9/12/07					184,500
Japan		26,000	43,000	Avail end Dec						69,000
Total	355	77,500	277,500	497,500+	35,000+					887,855

Percentage dispatched by region (Based on seasonal forecast - 2007)

